



Antenna Management System

Manage your antenna data with the established PreHCM AMS and accelerate the design of futureready wireless sites.

Central management, archiving and forwarding of your antenna master data

PreHCM AMS - Antenna Management System - is a workflow management tool from the product range of PreHCM Services GmbH from Germany. PreHCM AMS efficiently manages and archives the entire antenna master data across the individual product lifecycle of an antenna.

We enable you to secure your future-proof data basis for radio planning, application management and EMC processing. The merging and exchange of antenna data with other network operators and tower companies already works today without media discontinuity. Whether in joint use projects at shared sites, in applications to the authorities or in border coordination with foreign operators, the routine exchange of antenna data is always an important component.

By using PreHCM AMS, you reduce processing time and increase quality by using consistent data.

PreHCM Services has profound experience in accompanying mobile network operators in process definitions and coordination rounds, from more than 15 years. Software development is carried out with consideration for customer-specific interfaces and current software technologies and standards.

For more information and a live demo, feel free to contact us!

You know these challenges:

Search in distributed antenna data

- Each tool saves data from the same Antenna only for its purpose
- The complete life cycle of an antenna cannot be mapped

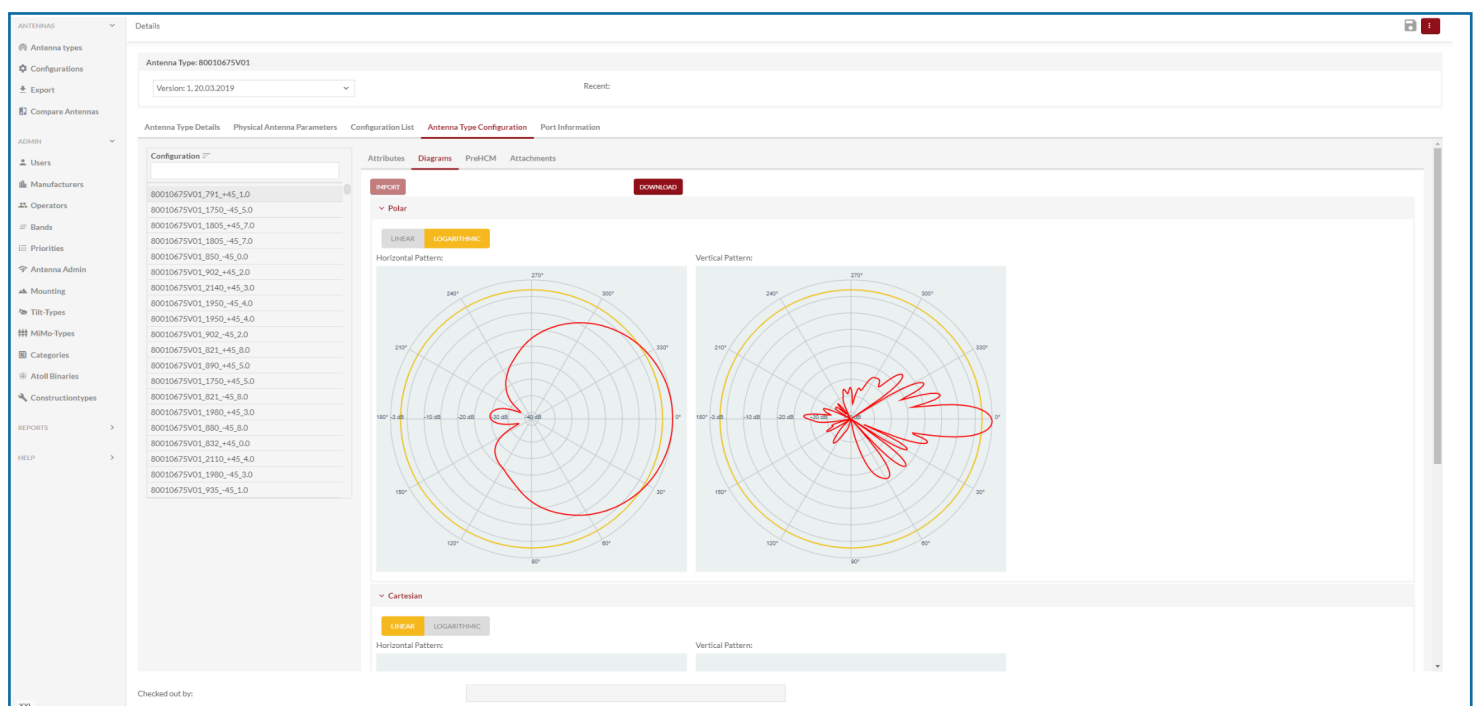
Too much time wasted

- Zip directories of the manufacturers must be laboriously sorted
- Complicated and manual import of different input formats

Complex data consolidation

- Migration and comparison of different data sources is very time-consuming

We have your solution!



Central data management

- Enterprise-wide unique antenna master data and designations in one repository
- Complete life cycle of an antenna can be mapped by a suitable status model

Organized data management

- Easy import of common input formats such as MSI, NGNM/BASTA and manufacturer specifications
- Variable deployment platform (on-prem or in the cloud) and databases implementable

Information data management

- Ideal information distribution in the own tool chain and interfaces to the common radio planning tools
- Future-proof exchange formats and interfaces (e.g. OpenAPI, BUS systems)